



PLY with its innovative use of birch plywood and laminate, takes the traditional desk top power module in an exciting new design direction.

PLY offers a choice of either premium “Alpine” white or dark grey matt laminate front trim to contrast or complement the black socket fascias and mounting bracket. As a stylish finishing touch a black & white rayon braided power cord can optionally be specified.

PLY is available in both vertical 2 gang and horizontal 3 gang versions, with a choice of international AC power sockets, our class leading TUF 25W twin USB fast charger and data and AV sockets. The integral powder coated steel clamp bracket enables desk edge or through desk mounting.

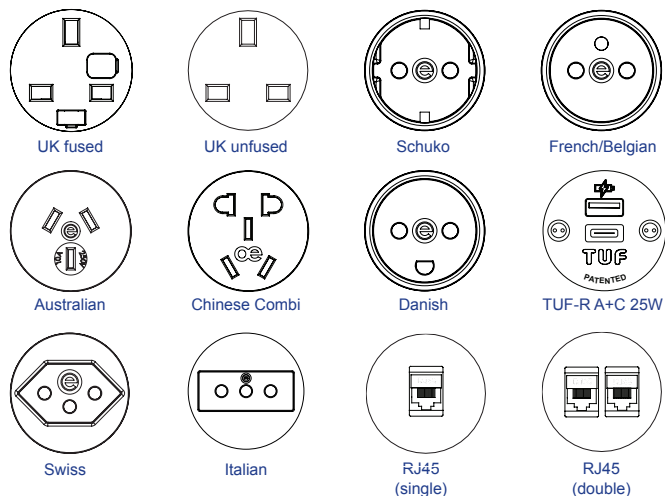


USPs

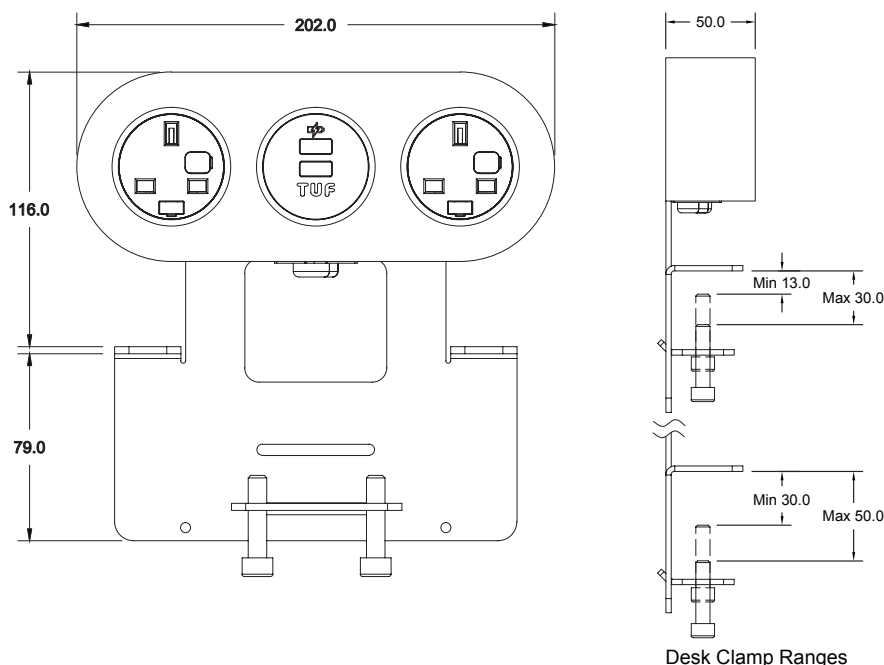
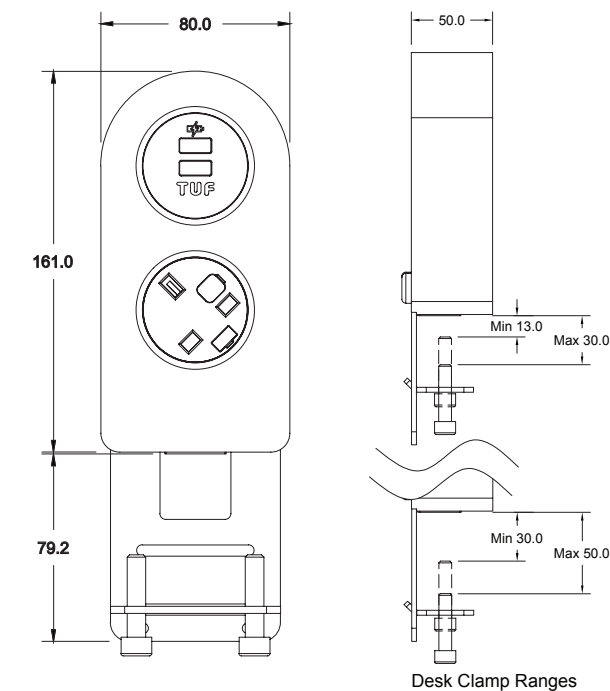
- Birch Ply construction
- Laminate front trim
- Vertical and Horizontal versions
- Braided power cord option
- BS5733 certified

technical

Common Modular Components



Unit Dimensions



Features

Configuration

PLY two gang vertical:

- 2 x AC power sockets or
- 1 x AC socket plus TUF A+C

PLY three gang vertical:

- 3 x AC power sockets, or
- 2 x AC socket plus TUF A+C, or
- 2 x AC socket plus data AV, or
- 1 x AC socket plus TUF A+C plus data/AV

Construction

Laminate faced birch ply body

Polycarbonate socket inserts and fascias.

Powder coated steel rear plate and bracket

Colours

White or dark grey laminate front trim.

Black socket inserts and fascias.

Black RAL9005 rear plate and bracket

Fusing

To enable BS6396 compliance, UK sockets can be fitted with 5 x 20mm anti-surge ceramic fuses, with colour-coded fuse clips to denote the rating (3.15A/5A)

Quality & Testing

All PLY units are manufactured using ISO9001 quality controlled components and practices and are 100% tested before dispatch.

- Visual: Configuration and appearance.
- Power sockets: Continuity, polarity, insulation & earth
- USB charger: Output voltage and resistance

Power-cord options

PLY is fitted with an 800mm black PVC power cord to Wieland GST18 male connector as standard, with braid sleeve option. Alternatively the required length power cord may be terminated with the appropriate mains AC plug for the socket type fitted.

CE marking

All units built with UK and European socket types are CE marked by OE Electrics as complying with:

- Electromagnetic Compatibility Directive 2014/30/EU
- Low Voltage Equipment Directive 2014/35/EU
- RoHS2 Directive 2015/863/EU

Certifications

PLY module – BS5733

AC power sockets and plugs – appropriate national standards

Wieland connectors – IEC 61535

OE 25W TUF – IEC60950-1/EMC/FCC

Installation

PLY is supplied as standard with an integrated steel clamp bracket for through desk or desk edge mounting in desk tops 13mm to 50mm thick.