

# pathfinder



Complete floor to desk, floor to ceiling, or ceiling to desk,  
vertical cable management solution

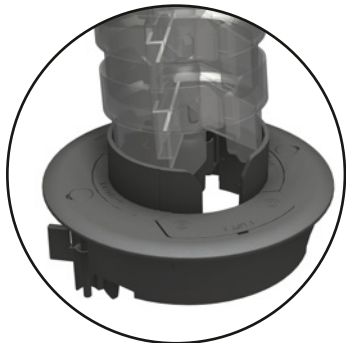
## Umbilical

PATHFINDER Top Fix can be: screwed to the underside of a desk top or meeting table; snapped into a 25mm hole in steel/plastic panels (such as PATHWAY ADAPTOR); or, (with integrated wire gripper), used to tension a ceiling hung umbilical

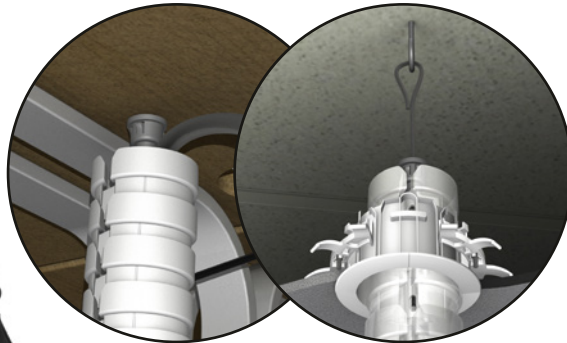
PATHFINDER segment jaws are designed to allow cables to be 'wiped in', or removed easily at any time



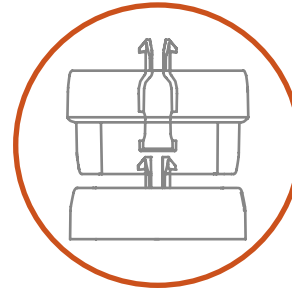
PATHFINDER has twin, asymmetric, segregated compartments, each capable of accepting power and data cables, as well as 16mm, 20mm and 25mm flexible conduits



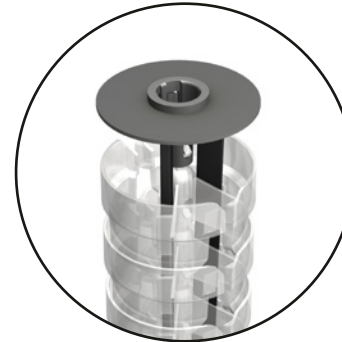
When used with our UNIQUE Floor Grommet, PATHFINDER allows **TOTAL CABLE PROTECTION**, unequalled by any other umbilical containment system



Optional stainless steel cord provides protection for cables from undue tension

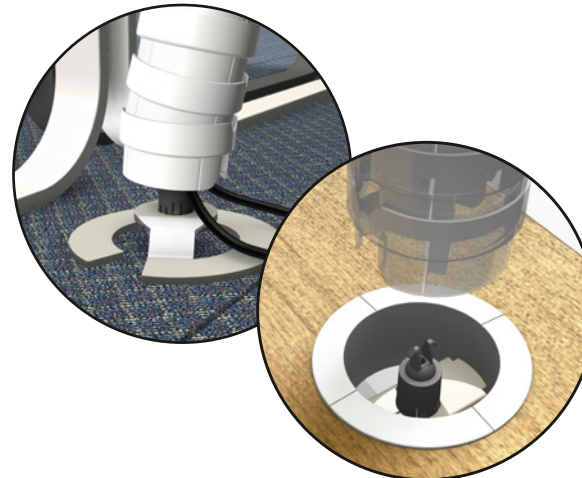


PATHFINDER can be extended on-site, to suit different applications, with a simple "PUSH & CLICK"



Where a RIGID umbili-column is required, support rods can be used to limit, or even prevent flexing. This feature also allows users to be creative in the design of Pathfinder routing

PATHFINDER bottom fixing can be: screwed to any suitable surface; used with the Pathfinder Weighted Base; or, clipped into the PATHFINDER Desk Flange for ceiling hung applications



## Zipper

Inserting cables making you mad? ...we've made it as easy as 1, 2, 3

1



2



3



The Pathfinder system from OE Electrics has been designed from 25 years experience in supplying cable management products, to offer a complete floor to desk, floor to ceiling, or ceiling to desk, vertical cable management solution.

Key PATHFINDER features include :

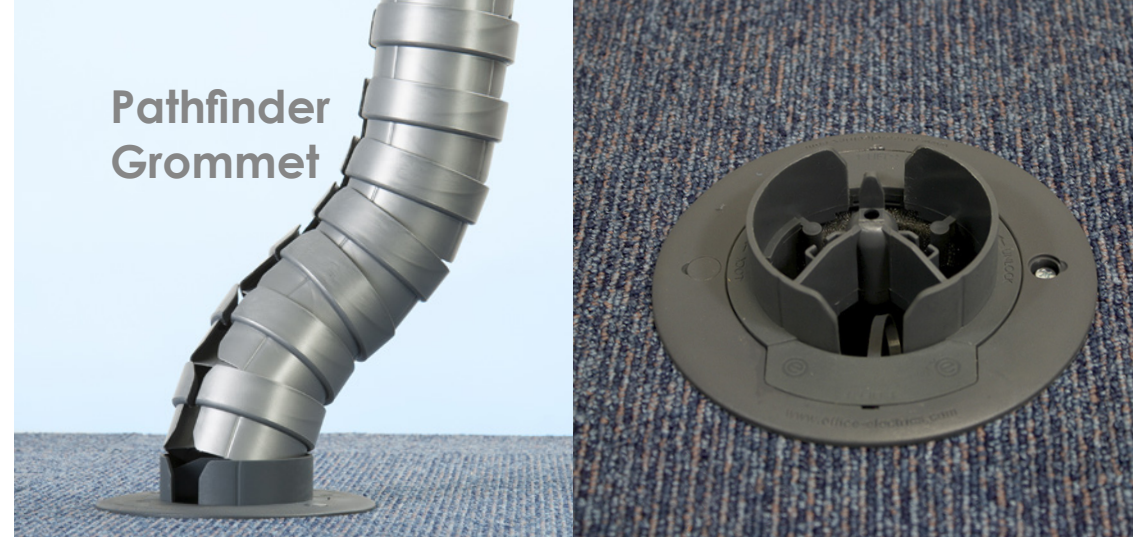
- A unique PATHFINDER GROMMET for feeding under floor cables directly into the umbilical
- Extendable sections to allow fixed desk, height adjustable desk or ceiling termination
- A wide range of floor, desk and ceiling fixing options to provide total cable management of cables
- Internal segregation for power and data cables to comply with BS regulations
- Flexible umbilical in white or clear polycarbonate

Combine PATHFINDER with PATHWAY cable tray for optimum cable management



**PATHFINDER - safety,  
practicality and  
aesthetics - combined!**

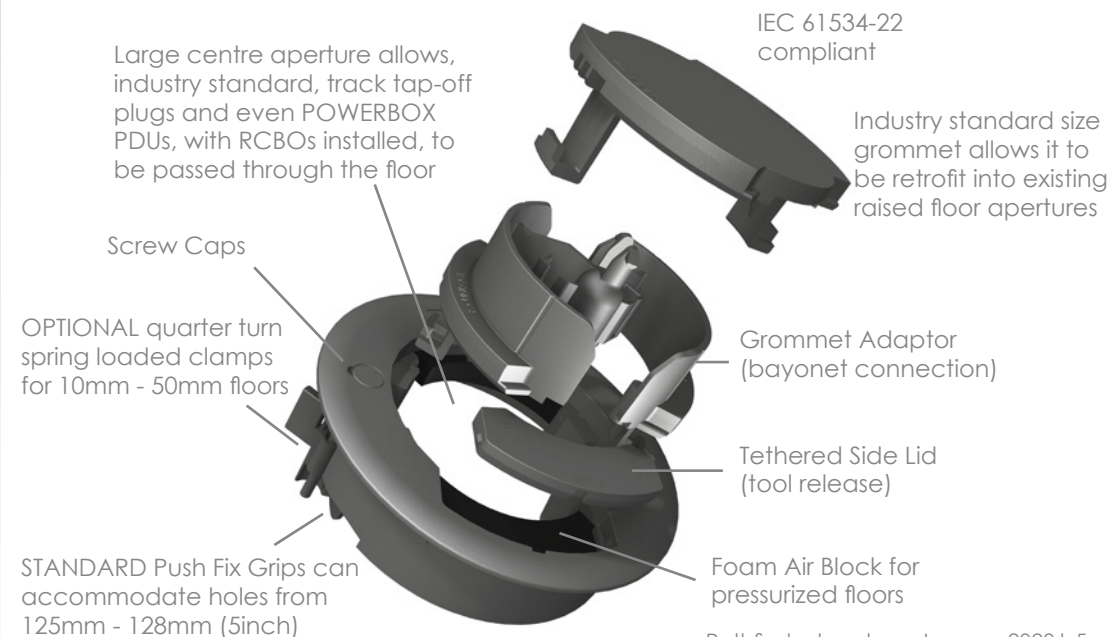
## Pathfinder Grommet



PATHFINDER Floor Grommet is the first of its kind to enable **TOTAL CABLE PROTECTION** from desk to underfloor, when used in conjunction with Pathfinder Umbilical.

Designed to QUICK-FIT into industry standard 5 inch / 125-128mm cutouts, the PATHFINDER Floor Grommet can be used as a conventional floor pass-thru, allowing power / data cabling, including 16mm flexible conduit, to exit via the Side Lids.

But, if used in conjunction with PATHFINDER Umbilical, using PATHFINDER Grommet Adaptor, it can even accommodate multiple 20mm / 25mm data conduits as well.



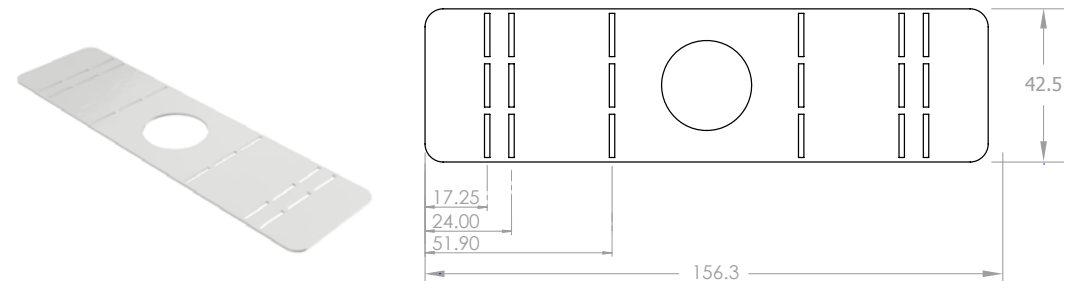




Our Pathfinder umbilical can be integrated with the EasyClamp for floor to desktop cable routing – Using either the Pathfinder's standard fixing or by attaching the Pathfinder directly to EasyClamp.



PATHWAY ADAPTOR CAN ALSO BE USED ON COMPATIBLE TRAYS OTHER THAN PATHWAY  
Check with OE Electrics outside these sizes for alternative/bespoke bracket





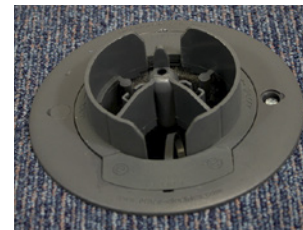
White



Silver



Black



Graphite Grey



Light Grey



White



Silver



Clear



Black

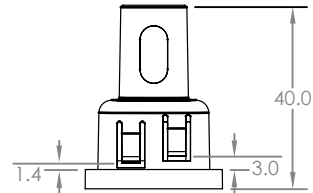
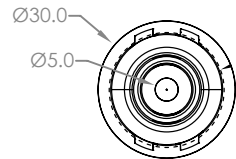
## Colours

Available in four standard colours (right). Custom colours (left) are also available on request.

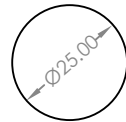


8 Standard colours available for Pathfinder segments (other colours available on request)

## TOP FIX

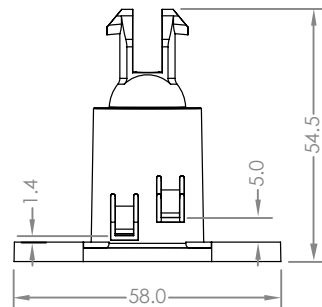
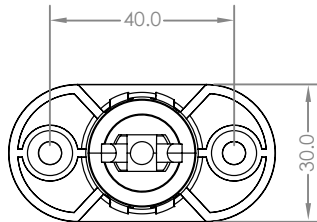


CUTOUT DIMENSIONS  
(both top & bottom fix)

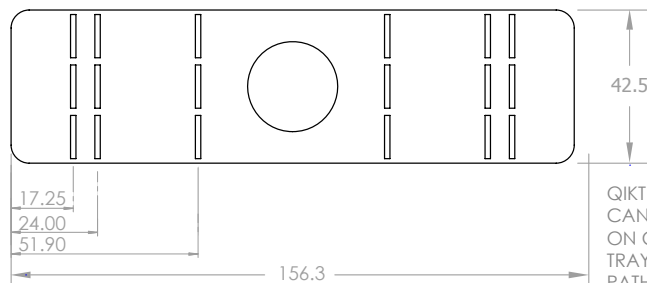


\* OPTIONAL PANEL  
THICKNESSES

## BOTTOM FIX

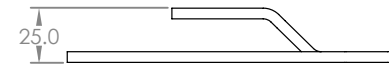
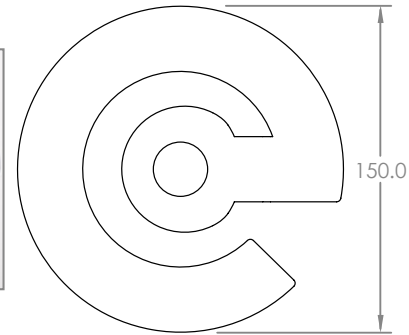


## QIKTRAY ADAPTOR

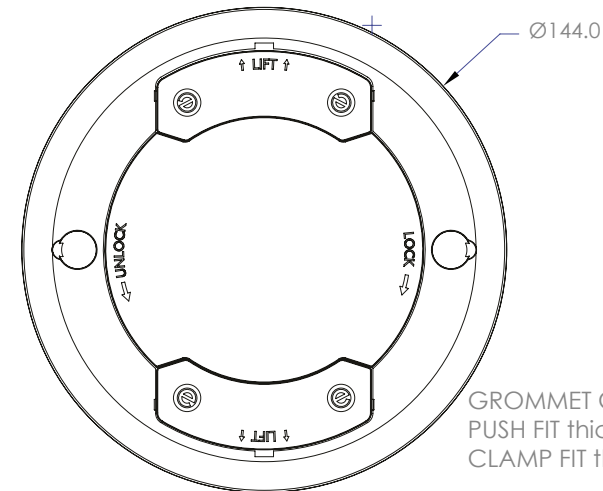


QIKTRAY ADAPTOR  
CAN ALSO BE USED  
ON COMPATIBLE  
TRAYS OTHER THAN  
PATHWAY  
Check with OE  
Electrics outside these  
sizes for alternative/  
bespoke bracket

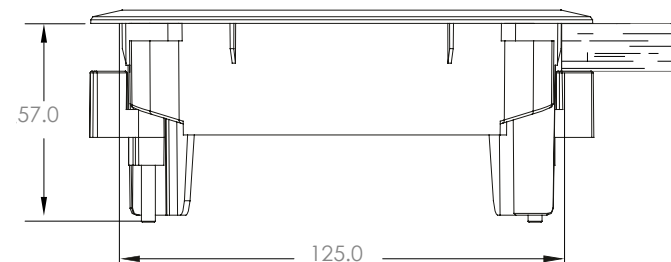
## WEIGHTED BASE



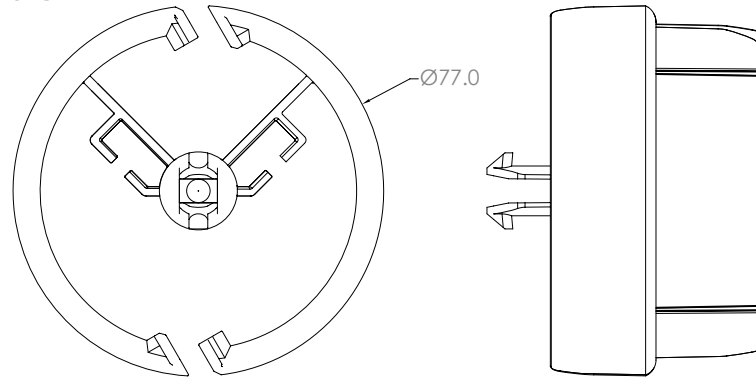
## FLOOR GROMMET



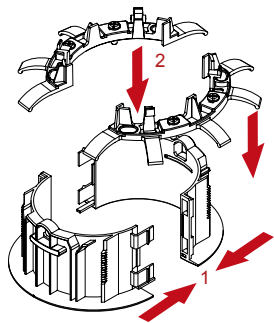
GROMMET CUTOUT 125 - 128mm (5 inch)  
PUSH FIT thicknesses min 10mm  
CLAMP FIT thicknesses min 10mm max 50mm



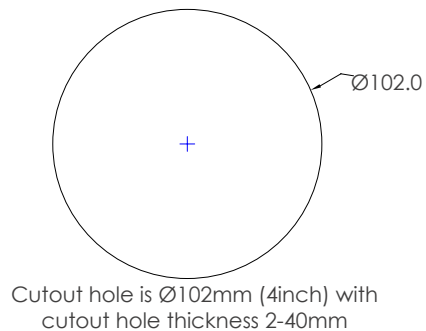
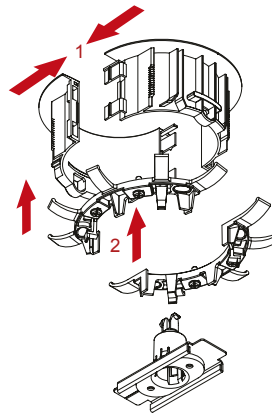
## SEGMENT



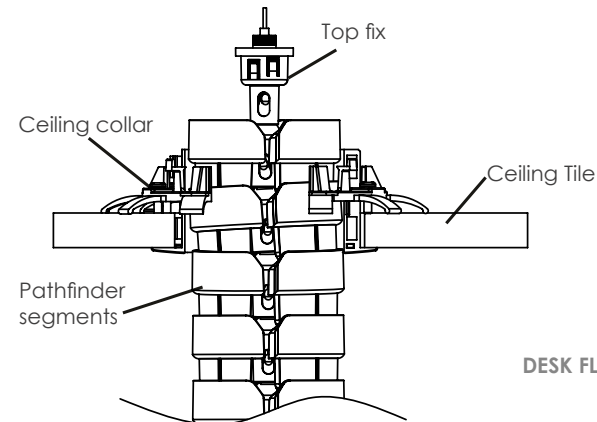
## CEILING COLLAR



## DESK FLANGE

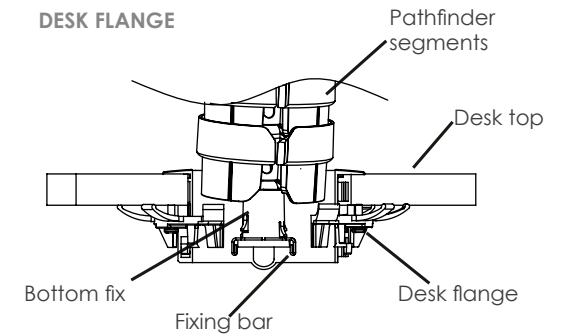


## CEILING COLLAR



Note: DO NOT hang PATHFINDER from Ceiling Collar, it is only a pass-thru

## DESK FLANGE



Note: DO NOT use Desk Flange upside down to hang from false ceiling tiles

## PATHFINDER CABLE AND CONDUIT CAPACITIES

| Cable Size  | Cable Type                           | Small compartment | Large compartment | Grommet sides |
|---|--------------------------------------|-------------------|-------------------|---------------|
| (OD = Outer Diameter)   | (examples)                           |                   |                   | (each side)   |
| Cables 6mm OD   | eg: CAT5e                            | 19 1              | 58 1              | 12 1          |
| Cables 9mm OD   | eg: 3 core 1.5mm <sup>2</sup> / CAT6 | 8 1               | 26 1              | 6 1           |
| Cables 11mm OD  | eg: 3 core 2.5mm <sup>2</sup>        | 6 1               | 17 1              | 4 1           |
| Conduit 16mm OD   | eg: underfloor track tap-off         | 2 2               | 6 2               | 2 2           |
| Conduit 20mm OD   | eg: data conduit                     | 1 23              | 3 23              | 0             |
| Conduit 25mm OD   | eg: data conduit                     | 1 23              | 1 23              | 0             |
| Note: All capacities reduce if using the Pathfinder Zipper<br>Notes: 1 - At 40% fill<br>2 - Maximum<br>3 - 20mm/25mm conduit cannot be inserted with the Zipper |                                      |                   |                   |               |

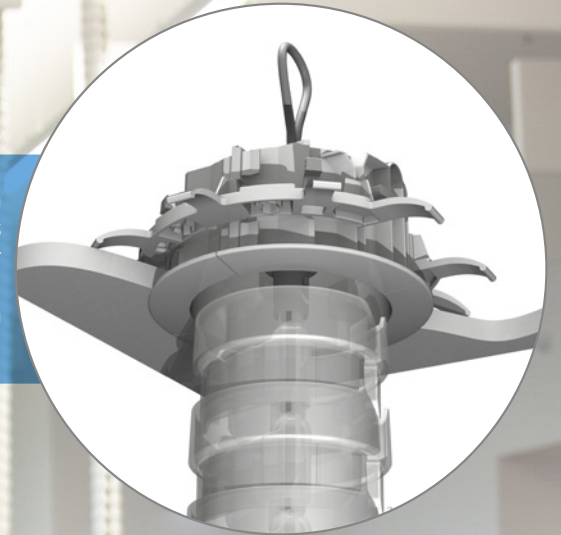


## Ceiling to desk

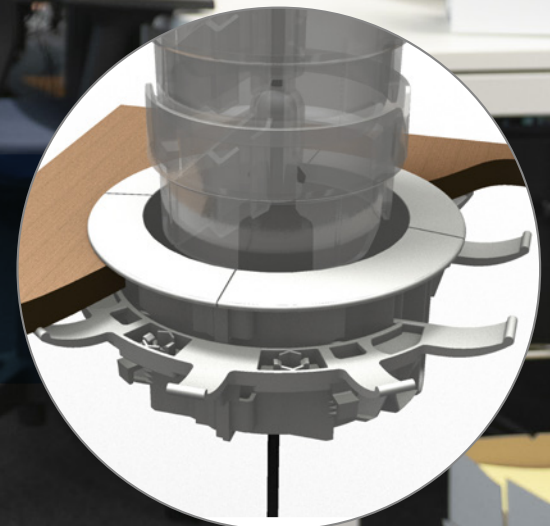
PATHFINDER provides an ideal solution where power and data services are distributed in the ceiling. Using our custom designed Ceiling Collar and Desk Flange, PATHFINDER provides TOTAL CABLE PROTECTION from ceiling void to PATHWAY cable tray.

Ceiling to desk umbilicals allow greater freedom for desk positioning (below ceiling apertures), than solid power poles, where CAD floorplans and on-site installation inevitably differ.

PATHFINDER Ceiling Collar gives a clean finished look when PATHFINDER drops through false ceilings. Designed to split in half, the Ceiling Collar can be clipped around PATHFINDER after it has been hung and cables 'zipped in'.



PATHFINDER Desk Flange simply clips into a 102mm (4inch) aperture, securing the base and allowing cables safe passage into PATHWAY cable tray under the desk.



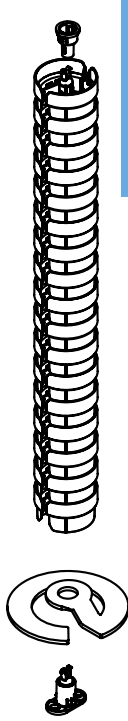


## JUST ENOUGH?

PATHFINDER with WEIGHTED BASE protects and manages cables vertically



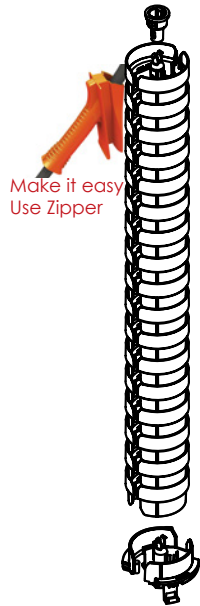
H & S WARNING - but it cannot protect cables across the floor



Floor to desk  
PATHFINDER can do both,  
the choice is yours!

Common  
configurations

When considering power  
and data cables -  
how much protection is  
enough?

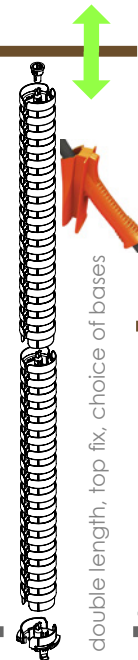


SAFE:  
with no cables exposed, tripping  
hazards are avoided and obstacle-free  
cleaning prevents dust & dirt build up

OR TOTAL?  
TOTAL CABLE  
PROTECTION  
with PATHFINDER  
and PATHFINDER  
GROMMET

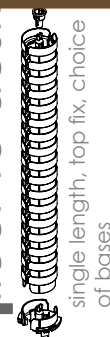


floor to adjustable desk



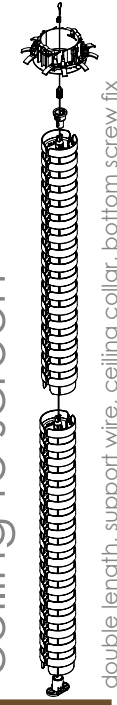
double length, top fix, choice of bases

floor to desk



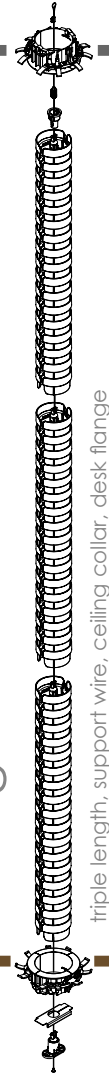
single length, top fix, choice of bases

ceiling to screen



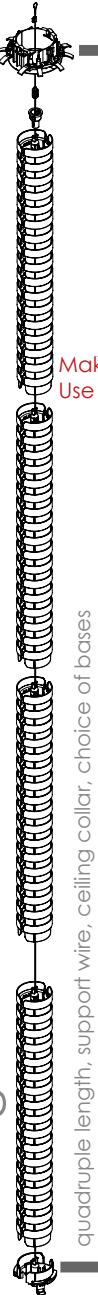
double length, support wire, ceiling collar, bottom screw fix

ceiling to desk



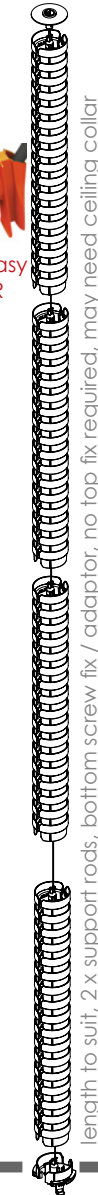
triple length, support wire, ceiling collar, desk flange

ceiling to floor



quadruple length, support wire, ceiling collar, choice of bases

umbili-column



length to suit, 2 x support rods, bottom screw fix / adaptor, no top fix required, may need ceiling collar